

AMILO Si1520 WLAN and Bluetooth configuration Windows Vista

Issue 02/12/2007

Category Installation paper

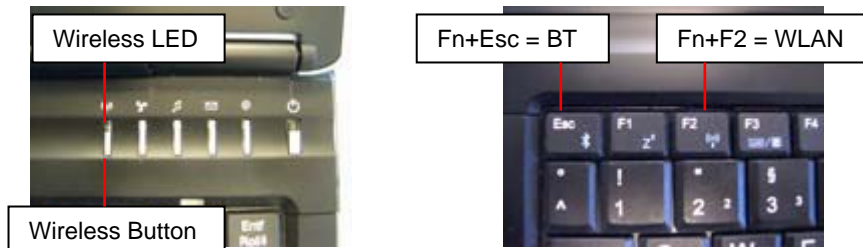
Content WLAN and BT configuration

Use External

Pages 4

1. Activate wireless LAN and Bluetooth adapter

- The wireless LAN / Bluetooth button is one of the easy launch buttons on top right
- Press the wireless LAN / Bluetooth button to activate wireless LAN and Bluetooth
- The wireless indicator lights up after Windows is started



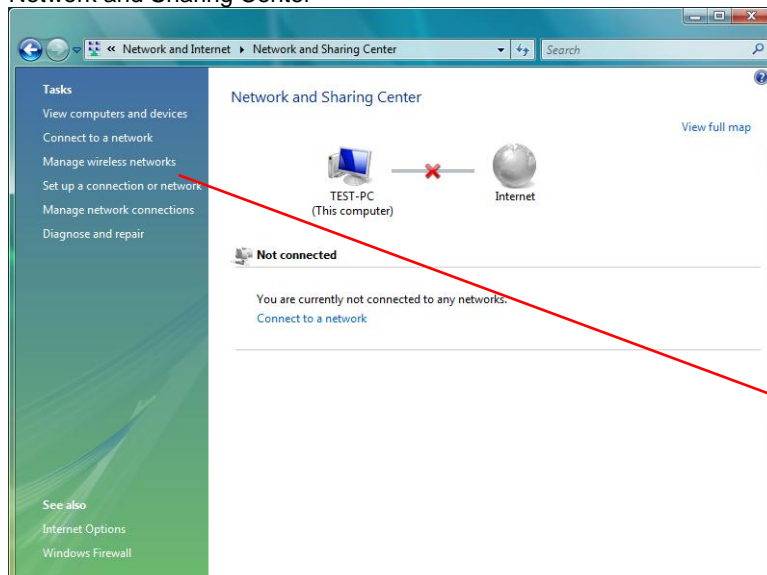
2. Software

- Driver and Utility

3. Wireless LAN configuration with Windows Vista

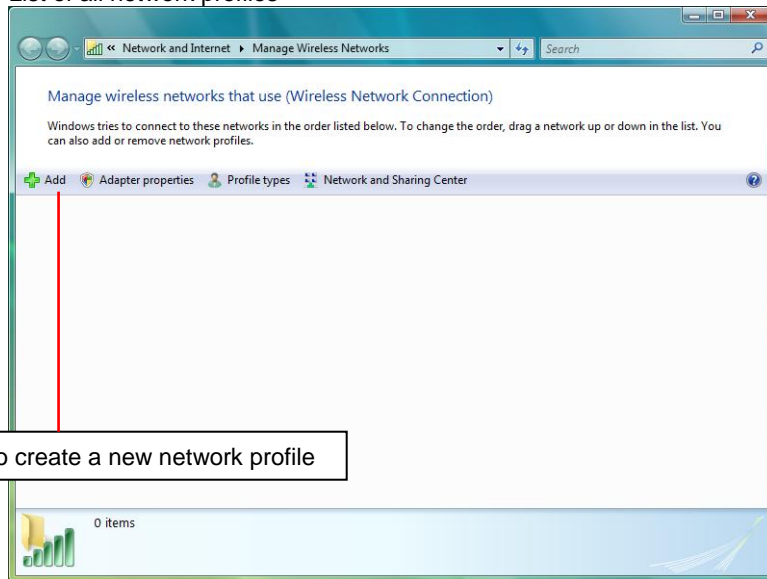
- Activate wireless LAN at AMILO and router
- Open Network and Sharing Center
start → Control Panel → Network and Internet → Network and Sharing Center
- Set wireless LAN connection settings
Manage wireless networks → Add → Manually create a network profile → specify network details → Connect To →

Network and Sharing Center



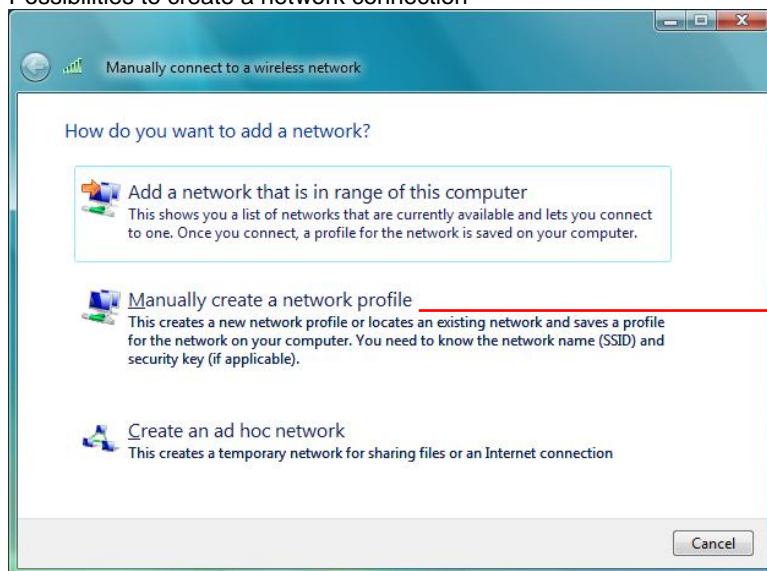
Select **Manage wireless networks**

List of all network profiles



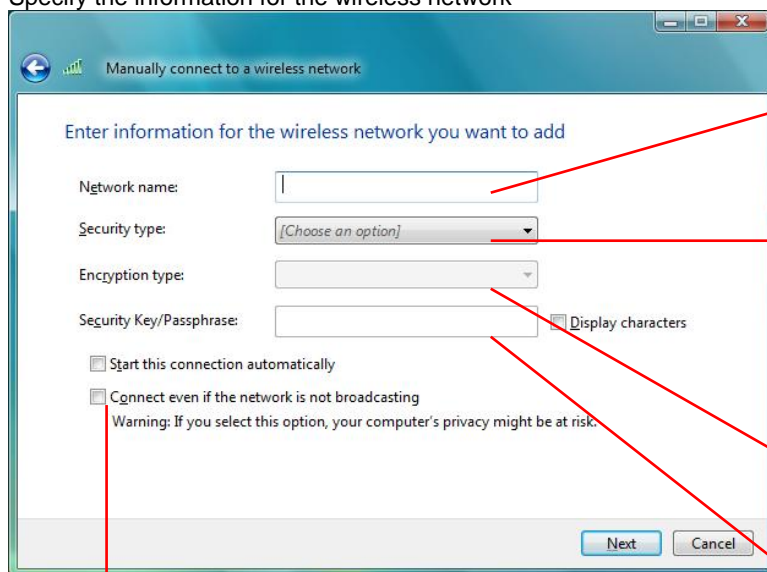
Add to create a new network profile

Possibilities to create a network connection



Select **Manually create network profile**

Specify the information for the wireless network



Insert **Network name**
SSID = Service Set Identifier
max. 32 digits

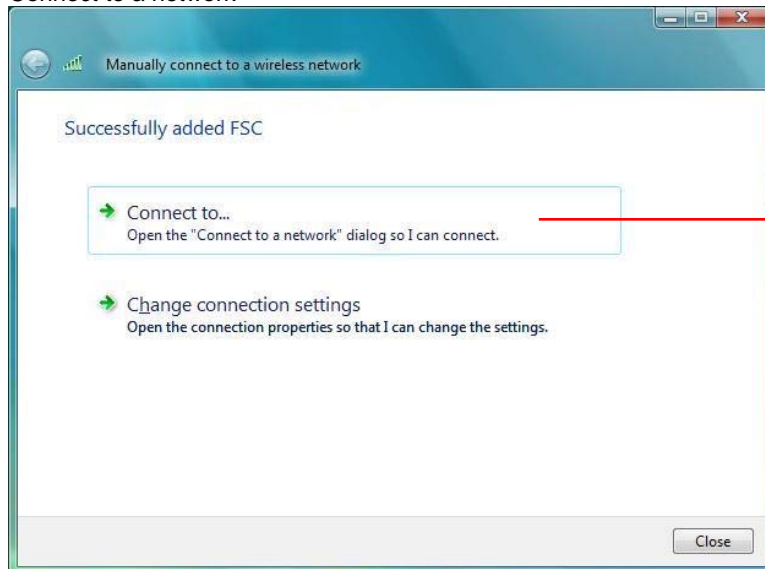
[Choose an option]
No authentication (Open)
WEP
WPA2-Personal
WPA-Personal
WPA2-Enterprise
WPA-Enterprise
802.1x

TKIP
TKIP
AES

Input box for **Security Key**

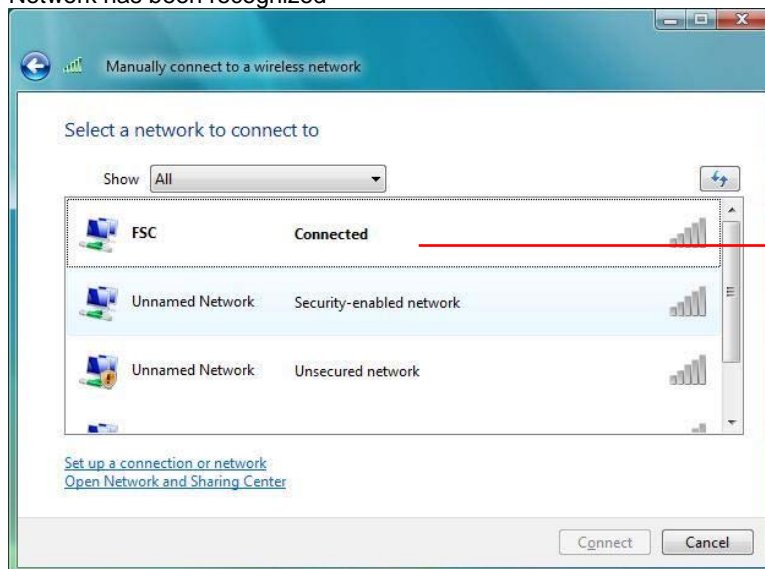
Important: Mark, if SSID is hidden

Connect to a network



Select, if you specified all information

Network has been recognized



Connected to the Network

4. Bluetooth configuration with Windows Vista and Toshiba Bluetooth Software 5.0

Installation of Bluetooth Software

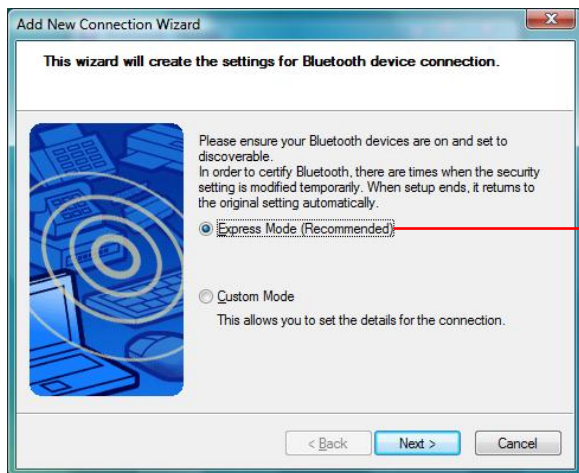
- Put in Driver and Utility
- Choose below Manual installation
 - a) Step 1 → Select AMILO
 - b) Step 2 → General software
 - c) Step 3 → Windows Vista
- Click the floppy symbol at Bluetooth
- Run and unzip file
- The installation will be started automatically after the file has been unzipped

Add Bluetooth device

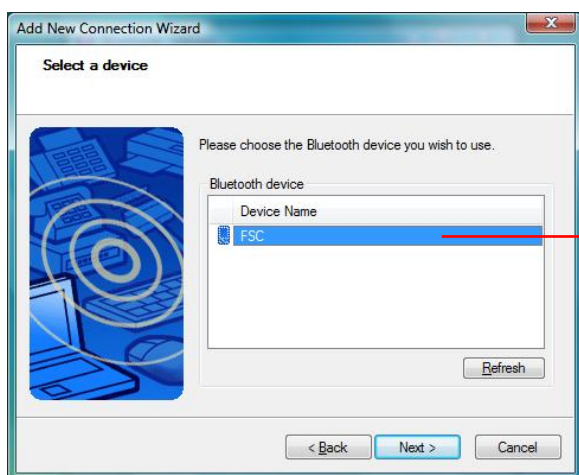
- Start → All Programs → Bluetooth → Bluetooth Settings



Select **New Connection**



Express Mode for easy configuration



Bluetooth device has been recognized

Hint: Some devices are hidden after Bluetooth activation to prevent an unwanted access. The Bluetooth settings has to be changed